

\$6,795,360 - 12765 N Ih 35, San Antonio

MLS® #1351440

\$6,795,360

Bedroom, Bathroom, 2,271,105 sqft
Commercial on 52 Acres

N/A, San Antonio, TX

52 acres of platted land by Ikea San Antonio. Zoned C-3 and Multi Family. Frontage on IH 35 and Topperwein Rd. Owner will subdivide.

Essential Information

| | |
|----------------|-----------------|
| MLS® # | 1351440 |
| Price | \$6,795,360 |
| Square Footage | 2,271,105 |
| Acres | 52.14 |
| Type | Commercial |
| Sub-Type | Commercial Land |
| Status | Active |

Community Information

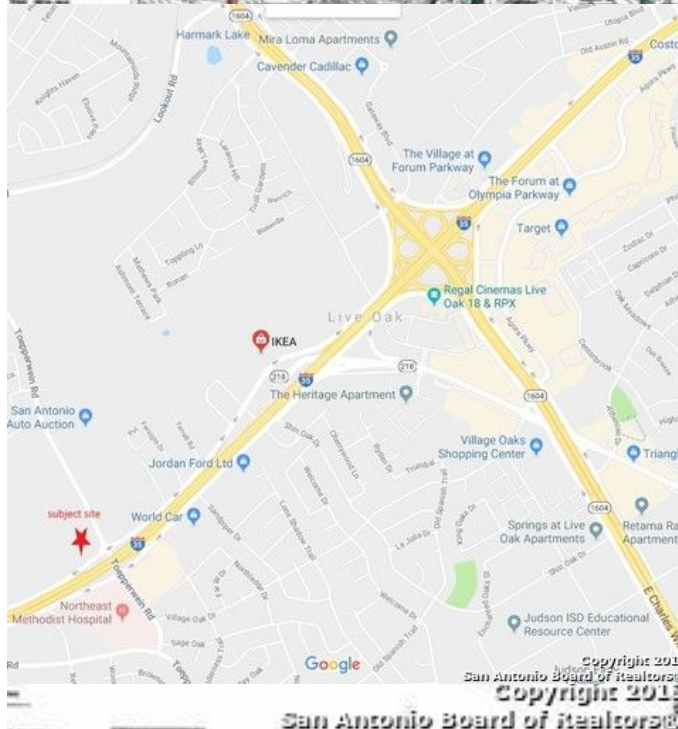
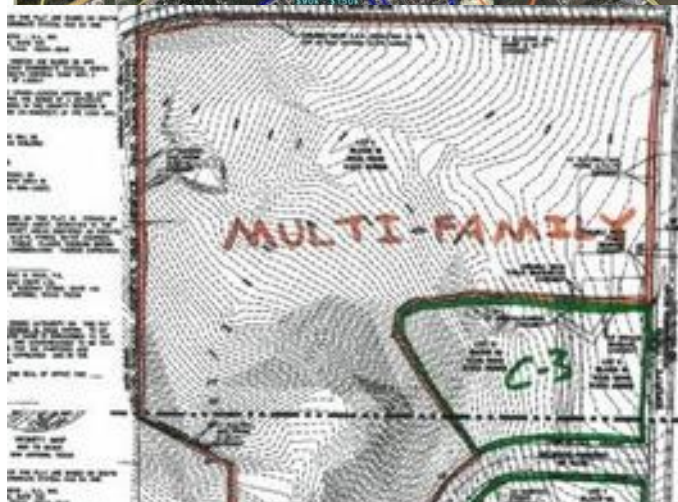
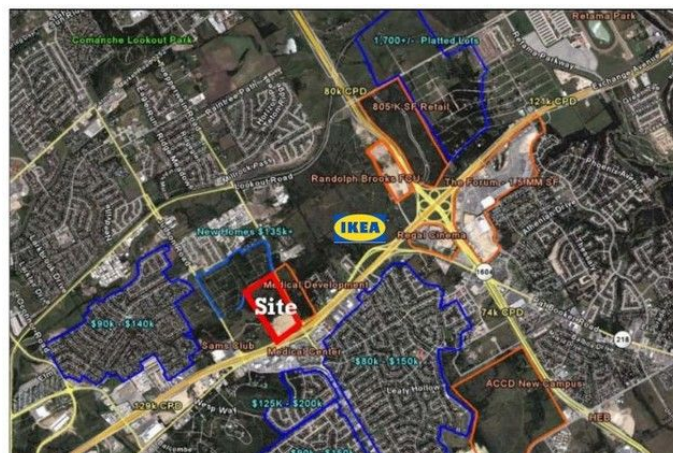
| | |
|-------------|---------------|
| Address | 12765 N Ih 35 |
| Area | 1500 |
| Subdivision | N/A |
| City | San Antonio |
| County | Bexar |
| State | TX |
| Zip Code | 78233 |

Amenities

Utilities Electricity, Water, Sewer

Additional Information

| | |
|----------------|---------------------|
| Date Listed | November 28th, 2018 |
| Days on Market | 324 |
| Zoning | MF/ C-3 |



Listing Details

Listing Office Paley Realty

The data relating to real estate on this web site comes in part from the Internet Data Exchange program of the MLS of the San Antonio Board of Realtors®, and is updated as of October 19th, 2019 at 4:51am CDT (date/time). IDX information is provided exclusively for consumers' personal, non-commercial use and may not be used for any purpose other than to identify prospective properties consumers may be interested in purchasing.