

# \$3,200,000 - S Ih 35 Tract 3, New Braunfels

MLS® #1265280

## \$3,200,000

Bedroom, Bathroom, 505,601 sqft  
Commercial on 12 Acres

N/A, New Braunfels, TX

FAST GROWING COMMERCIAL LAND IH 35  
Frontage Schertz City. Approx 12 acres. Make  
this an excellent opportunity for a  
COMMERCIAL BUSINESS!!

## Essential Information

MLS® #	1265280
Price	\$3,200,000
Square Footage	505,601
Acres	11.61
Type	Commercial
Sub-Type	Commercial Land
Status	Active

## Community Information

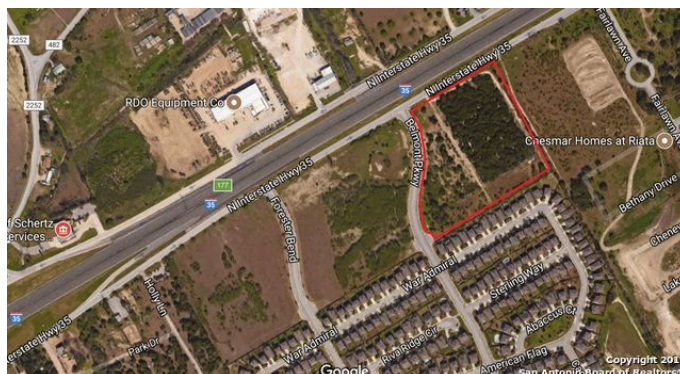
Address	S Ih 35 Tract 3
Area	2705
Subdivision	N/A
City	New Braunfels
County	Comal
State	TX
Zip Code	78132

## Amenities

Utilities	None
-----------	------

## Additional Information

Date Listed	August 25th, 2017
Days on Market	727



Zoning GB - GENERAL BUSINESS

## **Listing Details**

Listing Office Century 21 Northside

The data relating to real estate on this web site comes in part from the Internet Data Exchange program of the MLS of the San Antonio Board of Realtors®, and is updated as of August 22nd, 2019 at 1:28pm CDT (date/time). IDX information is provided exclusively for consumers' personal, non-commercial use and may not be used for any purpose other than to identify prospective properties consumers may be interested in purchasing.