

# \$3,457,401 - 26.46 Acres Fm 1518, Schertz

MLS® #1165534

**\$3,457,401**

Bedroom, Bathroom, 1,152,467 sqft  
Commercial on 26 Acres

N/A, Schertz, TX

Excellent Commercial Development Opportunity Perfect For -Great Apartment Site -Grocery, Retail, Mini Storage, etc. -Schertz School District -Corbett Elementary School to break ground this fall -Adjacent to Corbett Junior High -Development ready site easy access to Interstate 10, Randolph AFB -Currently in Schertz EJT (will be Annexed into the City) -Currently Ag Exempt and in Agriculture use. For additional information watch the attached Video Tour.

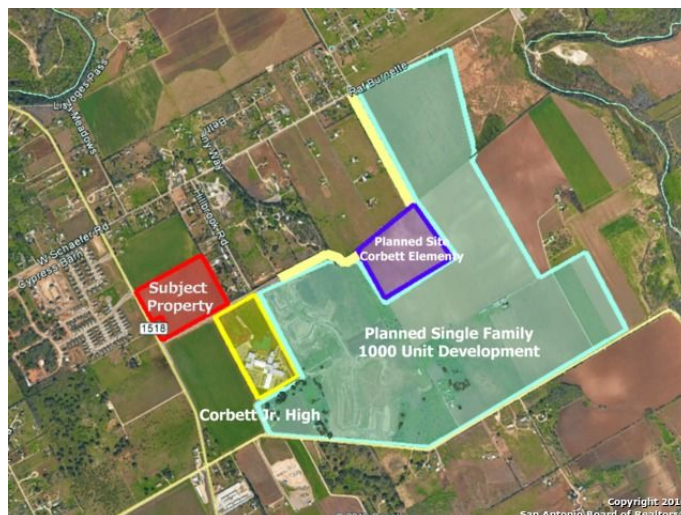


## Essential Information

MLS® #	1165534
Price	\$3,457,401
Square Footage	1,152,467
Acres	26.46
Type	Commercial
Sub-Type	Commercial Land
Status	Active

## Community Information

Address	26.46 Acres Fm 1518
Area	1700
Subdivision	N/A
City	Schertz
County	Bexar
State	TX
Zip Code	78108



## **Amenities**

Utilities                      None

## **Additional Information**

Date Listed                      March 8th, 2016

Days on Market                      1323

Zoning                              (DVL) DEVELOPMENT AGREEME

## **Listing Details**

Listing Office                      Premier Realty Group

The data relating to real estate on this web site comes in part from the Internet Data Exchange program of the MLS of the San Antonio Board of Realtors®, and is updated as of October 22nd, 2019 at 6:51pm CDT (date/time). IDX information is provided exclusively for consumers' personal, non-commercial use and may not be used for any purpose other than to identify prospective properties consumers may be interested in purchasing.