

\$4,490,000 - 670 S Peytonville Avenue, Southlake

MLS® #14440565

\$4,490,000

6 Bedroom, 6.30 Bathroom, 12,381 sqft
Residential on 3 Acres

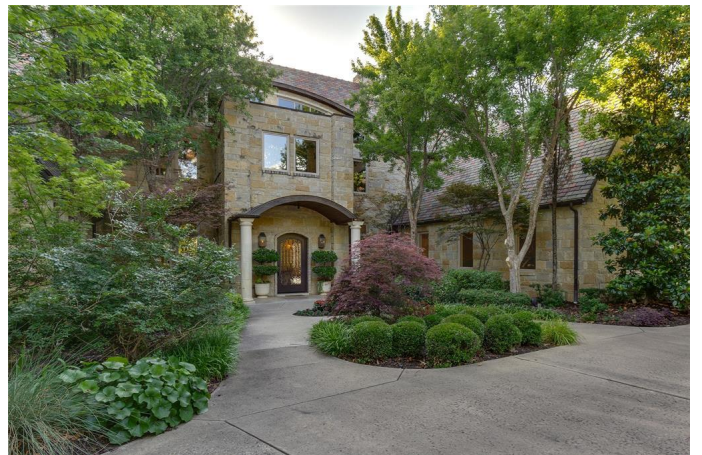
Airpark Estates Add, Southlake, TX

Find Unsurpassed Superior Quality & Rich Exquisite Finishes Tucked Away In A Private Gated Estate. Custom Designed by Nyhoff Architecture, this Open Floor Plan is an Entertainer's Dream Offering an Elegant Flow Boasting a Gourmet Kitchen w Top of the Line Appliances, Light & Bright Living Areas & Captivating Views. Enjoy the Main Level Media Room, 2nd Floor Exercise Room, Oversized Game Room w Wet Bar & Large Balcony that Overlooks the Backyard Paradise. The Spa Like Master Retreat w Beautiful Natural Light, Seating Area & Backyard Access Begs Your Presence. Escape to the Secluded Backyard Oasis w Lush Landscaping, Diving Pool w Spa, Gazebo w Kitchen & Fireplace, Sports Court & Beautiful Mature Trees.

Built in 2002

Essential Information

MLS® #	14440565
Price	\$4,490,000
Bedrooms	6
Bathrooms	6.30
Full Baths	6
Half Baths	3
Square Footage	12,381
Acres	2.76
Year Built	2002
Type	Residential



Sub-Type Single Family
Style Contemporary/Modern
Status Active

Community Information

Address 670 S Peytonville Avenue
Area SOUTHLAKE AREA (125)
Subdivision Airpark Estates Add
City Southlake
County Tarrant
State TX
Zip Code 76092-6910

Amenities

Utilities City Sewer, City Water, Concrete, Underground Utilities, Well
of Garages 5
Garages Circle Drive, Covered, Front, Garage, Oversized, Side
Has Pool Yes
Pool Attached Spa, Cabana, Cleaning System, Diving, Heated, In Ground
Gunite

Interior

Interior Features Built-in Wine Cooler, Cable TV Available, Central Vac, Decorative Lighting, Dry Bar, Flat Screen Wiring, High Speed Internet Available, Intercom, Multiple Staircases, Smart Home Features, Sound System Wiring, Vaulted Ceilings, Wet Bar, Window Coverings
Appliances Built-in Icemaker, Built-in Microwave, Built-in Refrigerator/Freezer, Commercial Grade Range, Commercial Grade Vent, Convection Oven, Cooktop - Gas, Dishwasher, Disposal, Double Oven, Warmer Oven Drawer, Water Line to Refrigerator
Heating Additional Water Heaters, Central Air-Elec, Central Heat-Gas, Zoned
Fireplace Yes
of Fireplaces 3
Fireplaces Blower Fan, Gas Starter, Wood Burning
of Stories 2
Stories 2

Exterior

Exterior Features Grill, Balcony, Covered Porch(es), Gazebo, Gutters, Outdoor Fireplace/Pit, Patio Covered, Sport Court, Sprinkler System

Lot Description	Acreage, Heavily Treed, Landscaped, Lrg. Backyard Grass
Windows	Double Pane Windows, Low E Windows
Roof	Tile/Slate
Construction	Rock/ Stone
Foundation	Piered Beam Slab, Slab

School Information

District	Carroll ISD
Elementary	Carroll
Middle	Dawson
High	Carroll

Listing Details

Listing Agent	Lucy Noonan
Listing Office	Synergy Realty

Users may not reproduce or redistribute the data found on this site. The data is for viewing purposes only. Data is deemed reliable, but is not guaranteed accurate by the MLS or NTREIS.

Listing information last updated on December 4th, 2020 at 8:16pm CST