

\$1,282,500 - 5950 Fm 920- A, Weatherford

MLS® #14434528

\$1,282,500

0 Bedroom, 0.00 Bathroom,
Land on 95 Acres

None, Weatherford, TX

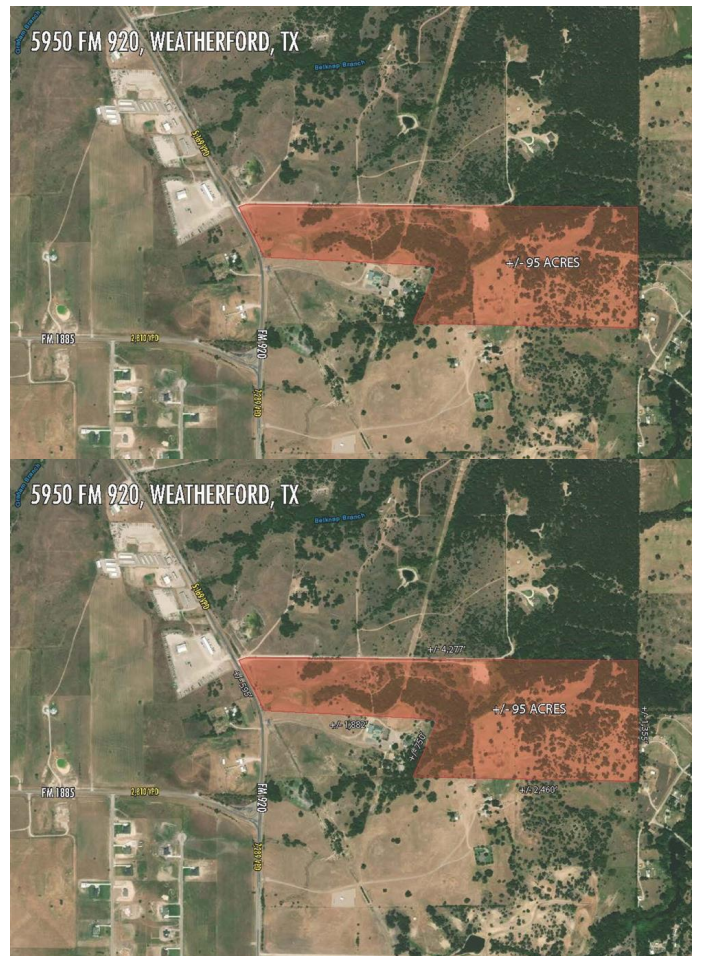
PRIME DEVELOPMENT OPPORTUNITY in highly sought after PEASTER ISD! Approximately 95 acres (a portion of The Texas Star Ranch & Retreat) of AG-EXEMPT land conveniently located at the intersection of FM 920 and FM 1885. EXCELLENT LOCATION- just minutes from downtown Weatherford and only 35 miles from downtown Fort Worth. The beautiful trees, seasonal creek and abundant wildlife make this the perfect location for development OR one's own private paradise to build that dream home in the country! Rare opportunity in Parker County!

Essential Information

MLS® #	14434528
Price	\$1,282,500
Bathrooms	0.00
Acres	95.00
Type	Land
Sub-Type	Farm / Ranch
Status	Active Option Contract

Community Information

Address	5950 Fm 920- A
Area	PARKER COUNTY (153)
Subdivision	None
City	Weatherford
County	Parker



State	TX
Zip Code	76088

Amenities

Utilities	Well
-----------	------

Exterior

Lot Description	Acreage, Horses Permitted, Pasture, Some Trees, Creek, Heavily Treed
-----------------	--

School Information

District	Peaster ISD
Elementary	Peaster
Middle	Peaster
High	Peaster

Additional Information

Zoning	Not Zoned
--------	-----------

Listing Details

Listing Agent	Brandy Bodenhamer
Listing Office	Prime Realty, LLC

Users may not reproduce or redistribute the data found on this site. The data is for viewing purposes only. Data is deemed reliable, but is not guaranteed accurate by the MLS or NTREIS.

Listing information last updated on November 26th, 2020 at 12:00pm CST