

\$884,900 - 150 Stafford Drive, Heath

MLS® #14375622

\$884,900

5 Bedroom, 5.00 Bathroom, 4,070 sqft
Residential on 1 Acres

Stoneleigh Ph 5B, Heath, TX

â€œWOW! BEAUTIFUL! AMAZING! OMG, THE MASTER CLOSET! THIS ONE WONT LAST LONG!â€• These are just a few comments from the Broker preview. This two story home in the prestigious Stoneleigh neighborhood is now READY! The home is a Carter Rena Design inspired home, built by Parkview Homes, the home is 4070 square feet, 5 bedroom, 5 baths, executive office, gourmet kitchen, 3 bedroom and 3 private bathrooms upstairs with a game room, private primary bedroom with large walk in closet.

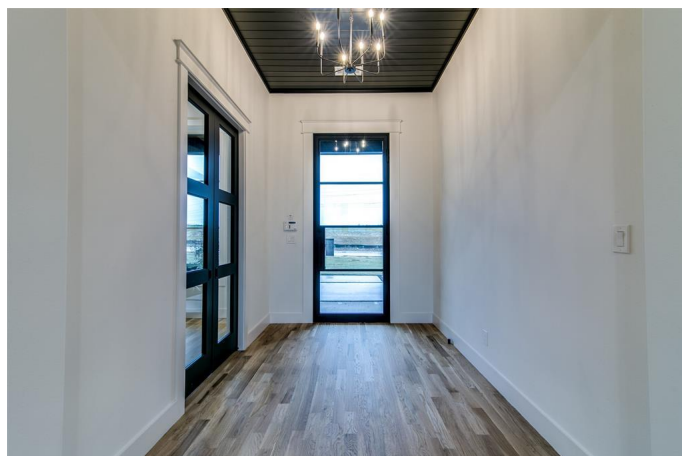
Built in 2020

Essential Information

MLS® #	14375622
Price	\$884,900
Bedrooms	5
Bathrooms	5.00
Full Baths	5
Square Footage	4,070
Acres	0.51
Year Built	2020
Type	Residential
Sub-Type	Single Family
Style	Contemporary/Modern
Status	Active Option Contract

Community Information

Address 150 Stafford Drive



Area	ROCKWALL COUNTY (34)
Subdivision	Stoneleigh Ph 5B
City	Heath
County	Rockwall
State	TX
Zip Code	75032

Amenities

Utilities	City Sewer, City Water
# of Garages	3
Garages	Garage

Interior

Interior Features	Cable TV Available, High Speed Internet Available, Flat Screen Wiring
Appliances	Dishwasher, Disposal, Built-in Microwave, Cooktop - Gas, Convection Oven, Double Oven, Oven - Electric, Water Line to Refrigerator
Heating	Central Air-Elec, Central Heat-Gas
Fireplace	Yes
# of Fireplaces	1
Fireplaces	Gas Logs, Gas Starter
# of Stories	2
Stories	2

Exterior

Lot Description	Landscaped, Lrg. Backyard Grass, Some Trees, Cul De Sac, Interior Lot, Subdivision
Roof	Composition, Metal
Construction	Brick
Foundation	Piered Beam Slab

School Information

District	Rockwall ISD
Elementary	Amy Parks-Heath
Middle	Cain
High	Heath

Listing Details

Listing Agent	Christina Satterfield
Listing Office	Results Property Group, LLC

Users may not reproduce or redistribute the data found on this site. The data is for viewing purposes only. Data is deemed reliable, but is not guaranteed accurate by the MLS or NTREIS.

Listing information last updated on November 27th, 2020 at 2:45pm CST