

# \$2,750,000 - 3009 A E Bankhead Highway, Weatherford

MLS® #14270835

**\$2,750,000**

0 Bedroom, 0.00 Bathroom,  
Land on 20 Acres

None, Weatherford, TX

20 acres zoned R 3 or MULTI FAMILY with an APPROVED site plan for 256 units, giving the property a huge jump start in development time frames and uplift in value. Buyer to verify schools, taxes, etc. Survey available.



## Essential Information

MLS® #	14270835
Price	\$2,750,000
Bathrooms	0.00
Acres	19.92
Type	Land
Sub-Type	Commercial
Status	Active

## Community Information

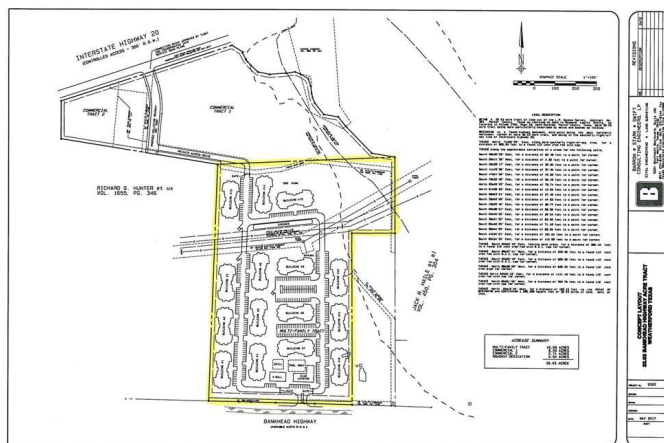
Address	3009 A E Bankhead Highway
Area	PARKER COUNTY (148)
Subdivision	None
City	Weatherford
County	Parker
State	TX
Zip Code	76087-9567

## Amenities

Utilities City Sewer, City Water

## Exterior

Lot Description Acreage, Some Trees



## **School Information**

District	Weatherford ISD
Elementary	Austin
Middle	Hall
High	Weatherfor

## **Additional Information**

Zoning	Multi-Family, Other
--------	---------------------

## **Listing Details**

Listing Agent	Jimmy Martin
Listing Office	RAILHEAD REALTY, LLC

Users may not reproduce or redistribute the data found on this site. The data is for viewing purposes only. Data is deemed reliable, but is not guaranteed accurate by the MLS or NTREIS.

Listing information last updated on November 26th, 2020 at 12:15am CST