

\$13,137,696 - 000 I 35 W, Northlake

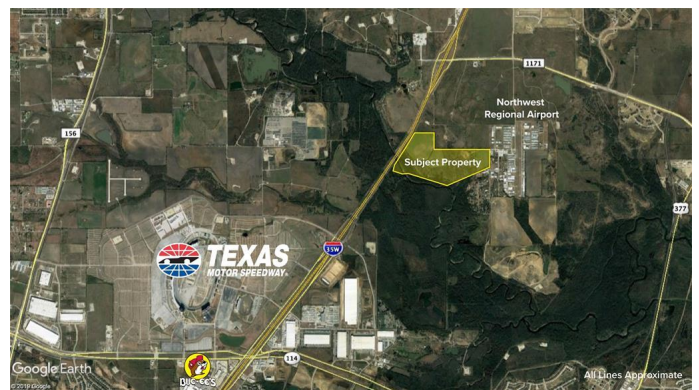
MLS® #14255326

\$13,137,696

0 Bedroom, 0.00 Bathroom,
Land on 151 Acres

A. M. GAULTNEY, Northlake, TX

150.813 acres, approximately 138 acres net.
The property is zoned M-PD: Mixed Use-Planned Development. The east side fronts Cleveland Gibbs, and the west side fronts I-35W. The service road is in planning stages. This is one of the hottest locations in the metroplex! Information in transaction desk for coming service roads. No water or sewer.



Essential Information

MLS® #	14255326
Price	\$13,137,696
Bathrooms	0.00
Acres	150.81
Type	Land
Sub-Type	Commercial
Status	Active

Community Information

Address	000 I 35 W
Area	DENTON COUNTY (31)
Subdivision	A. M. GAULTNEY
City	Northlake
County	Denton
State	TX
Zip Code	76262

Amenities

Utilities	No Sewer, No Water
-----------	--------------------

Exterior

Lot Description Acreage, Heavily Treed, Pasture

School Information

District Northwest ISD

Elementary Roanoke

Middle Pike

High Northwest

Additional Information

Zoning Other

Listing Details

Listing Agent Everette Newland

Listing Office Newland Real Estate, Inc.

Users may not reproduce or redistribute the data found on this site. The data is for viewing purposes only. Data is deemed reliable, but is not guaranteed accurate by the MLS or NTREIS.

Listing information last updated on October 26th, 2020 at 1:19pm CDT