

\$654,900 - 4969 Blaynes View, The Colony

MLS® #14175569

\$654,900

3 Bedroom, 3.10 Bathroom, 2,837 sqft
Residential on 0 Acres

Westport Lakeview Villas, The Colony, TX

Westport Lakeview Villas is a premiere lakefront luxury townhouse community comprised of 33 lake view villas with a private rooftop entertainment area overlooking spectacular sunset views of Lake Lewisville. Just minutes away from Billion Dollar Mile in Frisco, Dallas Cowboys Star, and the urban lifestyle at The Shops at Legacy. Townhouses include: gourmet appliances, spa-inspired master bath with freestanding soaking tub, glass shower, chrome fittings and hardware, 2 car garage, smart home automation package, wide plank hardwood floors, large architectural windows and oversized rooms. Additional options per unit include: gas fireplaces, outdoor grills, elevator, and much more. Rare property that you must see!

Built in 2018

Essential Information

MLS® #	14175569
Price	\$654,900
Bedrooms	3
Bathrooms	3.10
Full Baths	3
Half Baths	1
Square Footage	2,837
Acres	0.05
Year Built	2018
Type	Residential

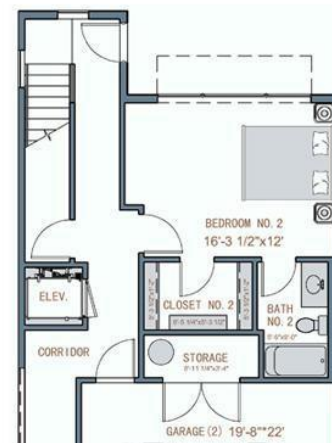
3D FLOOR PLAN

OUTDOOR ENTERTAINMENT AREA



FIRST FLOOR

PLAN B - 2837 SQ. FT. AC



3D FLOOR PLAN

FIRST FLOOR



Sub-Type	Townhouse
Style	Contemporary/Modern
Status	Active

Community Information

Address	4969 Blaynes View
Area	THE COLONY AREA (9)
Subdivision	Westport Lakeview Villas
City	The Colony
County	Denton
State	TX
Zip Code	75056

Amenities

Utilities	City Sewer, City Water, Community Mailbox, Concrete, Individual Gas Meter, Individual Water Meter, Sewer Tap Fee Paid, Water Tap Fee Paid
Features	Club House, Comm Sprinkler System, Community Pool, Greenbelt, Jogging Path/ Bike Path
# of Garages	2
Garages	Assigned Garage, Front, Opener, Other Parking/Garage
Is Waterfront	Yes
Waterfront	Lake Front " Corps of Engineers
Has Pool	Yes

Interior

Interior Features	Cable TV Available, Decorative Lighting, Flat Screen Wiring, High Speed Internet Available, Smart Home Features, Sound System Wiring, Elevator
Appliances	Built-in Microwave, Built-in Refrigerator/Freezer, Commercial Grade Range, Commercial Grade Vent, Cooktop - Gas, Dishwasher, Disposal
Heating	Central Air-Gas, Zoned
Fireplace	Yes
# of Fireplaces	1
Fireplaces	Gas Starter
# of Stories	3
Stories	3

Exterior

Exterior Features	Balcony, Gutters, Outdoor Fireplace/Pit, Outdoor Living Center, Patio
-------------------	---

Lot Description	Covered, Sprinkler System, Roof Top Deck/Patio
Windows	Greenbelt, Landscaped, Park View, Water/Lake View
Roof	Double Pane Windows, Low E Windows
Construction	Concrete
Foundation	Rock/ Stone, Stucco
	Piered Beam Slab

School Information

District	Lewisville ISD
Elementary	Ethridge
Middle	Lakeview
High	The Colony

Listing Details

Listing Agent	Michelle Packer
Listing Office	Grand Realty Services

Users may not reproduce or redistribute the data found on this site. The data is for viewing purposes only. Data is deemed reliable, but is not guaranteed accurate by the MLS or NTREIS.

Listing information last updated on October 22nd, 2019 at 1:45pm CDT