

\$490,250 - 6901 Us 287 Highway, Arlington

MLS® #14175496

\$490,250

0 Bedroom, 0.00 Bathroom,
Land on 2 Acres

401k Plus Add, Arlington, TX

Perfect Office or Child Care Location with Great visibility on Hwy 287, just North of the Eden Road Intersection. The Lot sits at the corner of US HWY 287 and Kelly Elliott Rd. Flat and level and ready to build. Water and Sewer are accessible, see attached Exhibit with Water and Sewer Line locations. If you are looking for a site with easy access and Great Visibility, this is it.

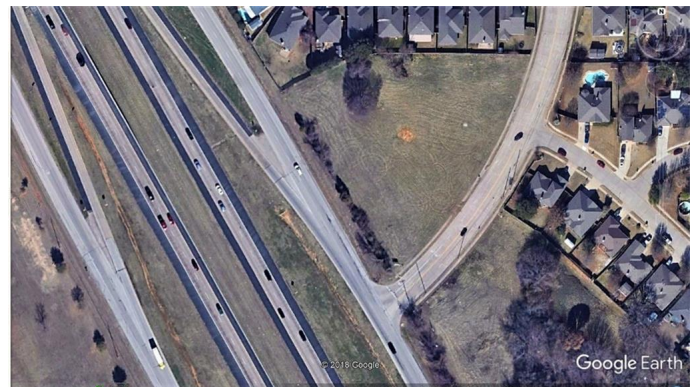
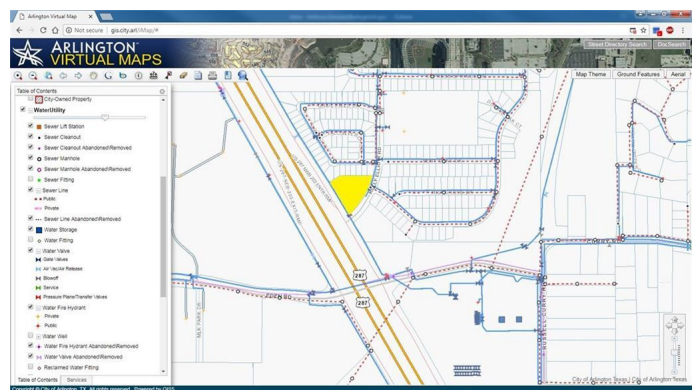
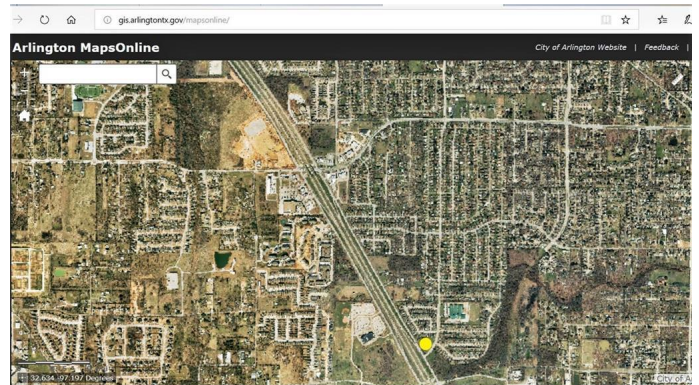
Essential Information

| | |
|-----------|------------|
| MLS® # | 14175496 |
| Price | \$490,250 |
| Bathrooms | 0.00 |
| Acres | 1.99 |
| Type | Land |
| Sub-Type | Commercial |
| Status | Active |

Community Information

| | |
|-------------|--------------------------|
| Address | 6901 Us 287 Highway |
| Area | ARLINGTON SOUTHWEST (87) |
| Subdivision | 401k Plus Add |
| City | Arlington |
| County | Tarrant |
| State | TX |
| Zip Code | 76001 |

Amenities



Utilities Asphalt, City Sewer, City Water, Curbs, Overhead Utilities

Exterior

Lot Description Acreage, Corner, Irregular, Some Trees

School Information

District Kennedale ISD

Elementary Delaney

High Kennedale

Additional Information

Zoning Office

Listing Details

Listing Agent Gavin Callaway

Listing Office Callaway Real Estate

Users may not reproduce or redistribute the data found on this site. The data is for viewing purposes only. Data is deemed reliable, but is not guaranteed accurate by the MLS or NTREIS.

Listing information last updated on October 14th, 2019 at 1:00pm CDT