

# \$5,400,000 - 2828 Oaks Crossing Road, Mineral Wells

MLS® #14111466

## \$5,400,000

3 Bedroom, 3.00 Bathroom, 2,993 sqft  
Residential on 553 Acres

none, Mineral Wells, TX

Chance of a lifetime to own this 553+- acre ranch in Palo Pinto Co. Roughly 4,288â€™ of Brazos River frontage, 4,221â€™ of Whatley Creek&6 new deep stock ponds. Coastal Bermuda grass & covered in oaks&pecan trees. Wildlife consists of ducks, deer, dove& hogs. Improvements consist of a newly remodeled 3 bd 3 b home with great views of a new pond, granite countertops & custom rock work. 2 equipment barns, 6 stall show barn, round pen & 6 paddocks.

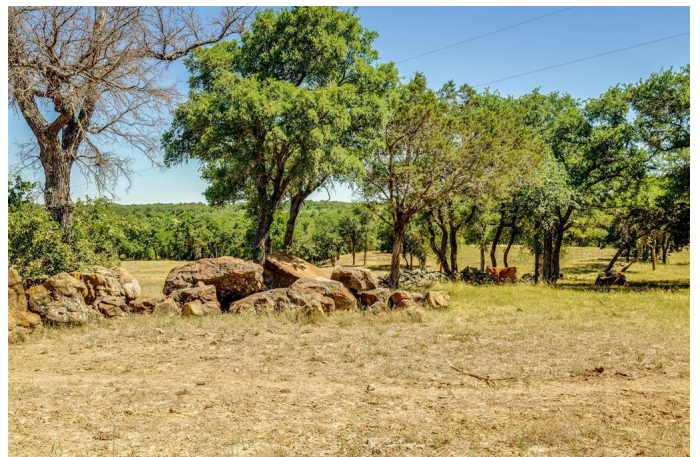
Built in 1995

## Essential Information

MLS® #	14111466
Price	\$5,400,000
Bedrooms	3
Bathrooms	3.00
Full Baths	3
Square Footage	2,993
Acres	553.00
Year Built	1995
Type	Residential
Sub-Type	Farm / Ranch
Style	Ranch, Traditional
Status	Active

## Community Information

Address	2828 Oaks Crossing Road
Area	PALO PINTO COUNTY (76)



Subdivision	none
City	Mineral Wells
County	Palo Pinto
State	TX
Zip Code	76067

### **Amenities**

Utilities	Asphalt, Co-op Water, Overhead Utilities, Septic, Well
Garages	Front, Other
Waterfront	River Front

### **Interior**

Interior Features	Decorative Lighting, Flat Screen Wiring
Appliances	Built-in Microwave, Cooktop - Electric, Dishwasher, Disposal, Oven - Electric, Refrigerator, Water Line to Refrigerator
Heating	Central Air-Elec, Central Heat-Elec
Fireplace	Yes
# of Fireplaces	1
Fireplaces	Metal Box, Wood Burning
# of Stories	1
Stories	1

### **Exterior**

Exterior Features	Covered Porch(es), Patio Covered, Gutters, Holding Pens, Lighting System, Other, Round Pens, Stable/Barn
Lot Description	Acreage, Creek, Cultivated, Heavily Treed, Horses Permitted, Lrg. Backyard Grass, Pasture, Some Trees, Tank/ Pond, Water/Lake View
Roof	Metal
Construction	Brick, Siding
Foundation	Slab

### **School Information**

District	Mineral Wells ISD
Elementary	Houston
Middle	Mineralwel
High	Mineralwel

### **Listing Details**

Listing Agent	Matt Milligan
Listing Office	Trinity Country Real Estate

Users may not reproduce or redistribute the data found on this site. The data is for viewing purposes only. Data is deemed reliable, but is not guaranteed accurate by the MLS or NTREIS.

Listing information last updated on October 30th, 2020 at 8:47pm CDT