

\$749,900 - 1040 Aledo Ridge Court, Aledo

MLS® #14048384

\$749,900

4 Bedroom, 4.00 Bathroom, 4,094 sqft
Residential on 1 Acres

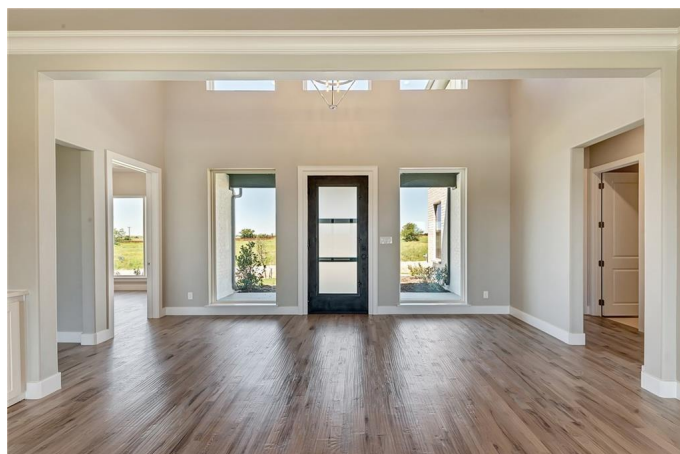
Aledo Ridge, Aledo, TX

From the Builders NEW Construction, on over an acre, in gated Aledo Ridge! Featuring a modern farmhouse exterior, 3-car, open floor plan, light & bright interior & tons of upgrades! The gourmet kitchen w island, granite counters & ss appliances overlooks the spacious living & dining areas. First floor game room, study, guest suite & split master's retreat w sitting area & his & her walk-in closets. On the second floor, living & 2 en-suite bedrooms. Oversized patio w fireplace. Add'l features include wood, tile & carpet floors, decorative lighting & granite counters. Electric or propane gas. No City, MUD or PID taxes in Aledo ISD! \$5,000 decoration allowance to Buyers under contract by October 31st.

Built in 2019

Essential Information

MLS® #	14048384
Price	\$749,900
Bedrooms	4
Bathrooms	4.00
Full Baths	4
Square Footage	4,094
Acres	1.09
Year Built	2019
Type	Residential
Sub-Type	Single Family
Style	Traditional



Status Active

Community Information

Address 1040 Aledo Ridge Court
Area PARKER COUNTY (145)
Subdivision Aledo Ridge
City Aledo
County Parker
State TX
Zip Code 76008

Amenities

Utilities Aerobic Septic, Co-op Water, Concrete, Curbs, Underground Utilities, Unincorporated, Outside City Limits, Private Road
Features Gated Entrance, Perimeter Fencing
of Garages 3
Garages Attached, Garage Door Opener, Oversized, Side

Interior

Interior Features Cable TV Available, Decorative Lighting, High Speed Internet Available
Appliances Built-in Microwave, Cooktop - Electric, Dishwasher, Disposal, Double Oven, Oven - Electric, Plumbed for Gas in Kitchen, Drop-In Range/Oven-Elec, Range/Oven-Gas, Vent Mechanism, Water Line to Refrigerator
Heating Central Air-Elec, Central Heat-Elec, Propane, Zoned
Fireplace Yes
of Fireplaces 2
Fireplaces Gas Starter
of Stories 2
Stories 2

Exterior

Exterior Features Covered Porch(es), Gutters, Outdoor Fireplace/Pit, Patio Covered, Sprinkler System
Lot Description Interior Lot, Landscaped, Lrg. Backyard Grass, Some Trees, Subdivision
Windows Double Pane Windows, Low E Windows
Roof Composition
Construction Brick, Wood
Foundation Slab

School Information

District	Aledo ISD
Elementary	Walsh
Middle	Aledo
High	Aledo

Listing Details

Listing Agent	John Zimmerman
Listing Office	Compass RE Texas, LLC

Users may not reproduce or redistribute the data found on this site. The data is for viewing purposes only. Data is deemed reliable, but is not guaranteed accurate by the MLS or NTREIS.

Listing information last updated on October 21st, 2019 at 8:15pm CDT