

\$4,668,449 - Fm 548 And Hwy 276, Royse City

MLS® #13969199

\$4,668,449

0 Bedroom, 0.00 Bathroom,
Land on 167 Acres

Gardner, Royse City, TX

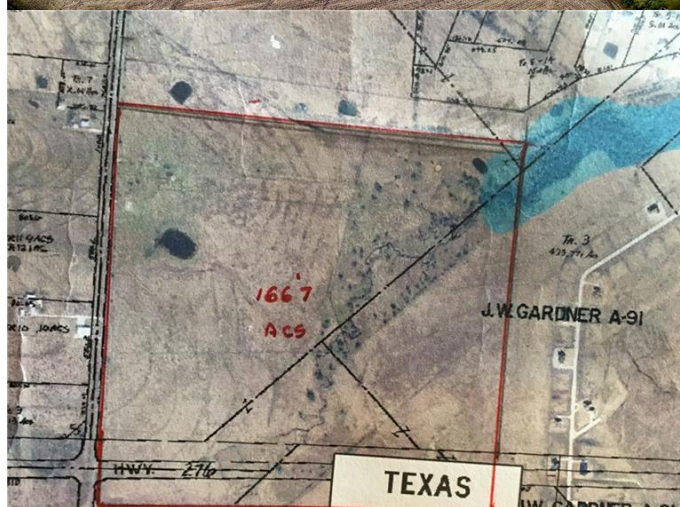
Perfect Opportunity to Develop a Single Family Subdivision with Commercial on the Corner. This is the perfect location for a developer to provide a family friendly neighborhood located in Royse City ISD. This location gives the families a country feel, but only 15 minutes away from downtown Rockwall and 10 minutes away from downtown Royse City. The Engineering is Already Done! 64 Lots and 20 Acres of Commercial have been Designed. Future 4 Lane Development on Highway 276.

Essential Information

MLS® #	13969199
Price	\$4,668,449
Bathrooms	0.00
Acres	166.73
Type	Land
Sub-Type	Farm / Ranch
Status	Active

Community Information

Address	Fm 548 And Hwy 276
Area	ROCKWALL COUNTY (34)
Subdivision	Gardner
City	Royse City
County	Rockwall
State	TX
Zip Code	75189



Amenities

Utilities Other

Exterior

Lot Description Acreage, Some Trees, Tank/ Pond

School Information

District Royse City ISD

Elementary Fort

Middle Royse City

High Royse City

Additional Information

Zoning Agriculture

Listing Details

Listing Agent Caprice Michelle

Listing Office Caprice Michelle, LLC

Users may not reproduce or redistribute the data found on this site. The data is for viewing purposes only. Data is deemed reliable, but is not guaranteed accurate by the MLS or NTREIS.

Listing information last updated on May 20th, 2019 at 11:45pm CDT