

# \$800,000 - Fite County Road 91, Pearland

MLS® #47235143

## \$800,000

0 Bedroom, 0.00 Bathroom,  
Lots on 10 Acres

H T & B R R, Pearland, Texas

Great 10-acres land on Fite Road in the heart of Pearland just minutes from FM 518, SH 288, and the Pearland town center. The property is conveniently located between the Rogers middle school on Fite at Manvel Rd, and the Carlestone Elementary school at Harkey Rd. Across the street from the lot is the Pearland Little League's baseball field. Fast growing area with lots of potentials. Great opportunity to buy now and build later. Build your dream house or multiple houses development on the lot. Seller will consider subdivide the lot and sell a 4.625-acres smaller sub-lot with Fite road frontage for half price. Imagine the possibilities you can utilize for the lot.

## Essential Information

MLS® #	47235143
Price	\$800,000
Bathrooms	0.00
Square Footage	435600
Acres	10.00
Type	Lots
Status	Active

## Community Information

Address	Fite County Road 91
Area	5 - Brazoria County
Subdivision	H T & B R R

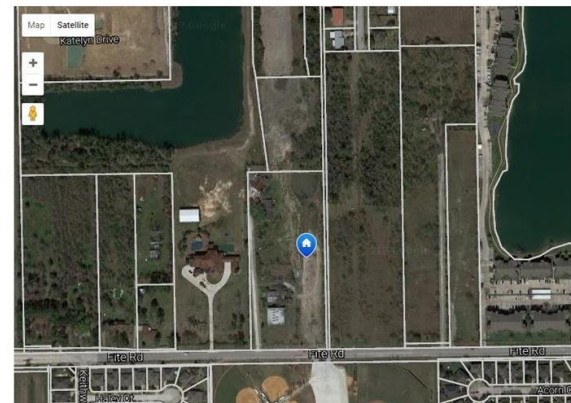


PROPERTY MAP

minimize

Nearby places and schools.

Street View Birds Eye View School Boundaries Nearby Places



City	Pearland
County	Brazoria
State	Texas
Zip Code	77581

### **Interior**

# of Stories	0.00
--------------	------

### **Exterior**

Lot Description	Can Be Subdivided
-----------------	-------------------

### **School Information**

District	42 - Pearland
Elementary	H C CARLESTON ELEMENTARY SCHOOL
Middle	JAMISON/PEARLAND J H SOUTH
High	PEARLAND HIGH SCHOOL

### **Additional Information**

Days on Website	90
-----------------	----

### **Listing Details**

Listing Office	Realty Associates
----------------	-------------------

Copyright © 2020, Houston Realtors Information Service, Inc. All information provided is deemed reliable but is not guaranteed and should be independently verified. The IDX information is provided exclusively for consumers' personal, non-commercial use, it may not be used for any purpose other than to identify prospective properties consumers may be interested in purchasing. All information provided is deemed reliable but is not guaranteed accurate by the MLS and should be independently verified.

Listing information last updated on November 27th, 2020 at 5:55am CST