

\$2,750,000 - 24151 Highway 59, Porter

MLS® #12007414

\$2,750,000

0 Bedroom, 0.00 Bathroom,
Country Homes/Acreage on 7 Acres

mary owens, Porter, Texas

Prime land with US 59 frontage in a fast growing corridor spurred by the Master planned communities of Valley Ranch and Tavola. The property is cleared and has two curb cuts and approximately 433' of US Hwy 59 frontage, has access to utilities and great traffic counts/exposure, located directly across from Auburn Trails at Oakhurst.

Essential Information

MLS® #	12007414
Price	\$2,750,000
Bathrooms	0.00
Acres	6.90
Type	Country Homes/Acreage
Status	Active

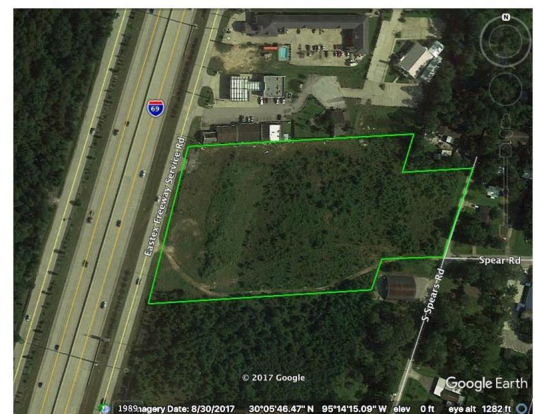
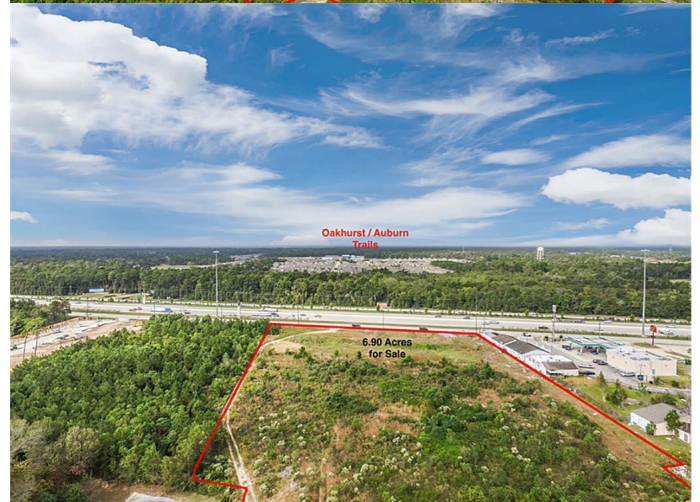
Community Information

Address	24151 Highway 59
Area	40 - Montgomery County SE
Subdivision	mary owens
City	Porter
County	Montgomery
State	Texas
Zip Code	77365-6112

Interior

# of Stories	0.00
--------------	------

School Information



District	39 - New Caney
Elementary	PORTER ELEMENTARY SCHOOL (NEW CANEY)
Middle	WOODRIDGE FOREST MIDDLE SCHOOL
High	PORTER HIGH SCHOOL (NEW CANEY)

Additional Information

Days on Website 659

Listing Details

Listing Office Creighton Realty Partners, LLC

Copyright © 2019, Houston Realtors Information Service, Inc. All information provided is deemed reliable but is not guaranteed and should be independently verified. The IDX information is provided exclusively for consumers' personal, non-commercial use, it may not be used for any purpose other than to identify prospective properties consumers may be interested in purchasing. All information provided is deemed reliable but is not guaranteed accurate by the MLS and should be independently verified.

Listing information last updated on August 19th, 2019 at 9:40am CDT